

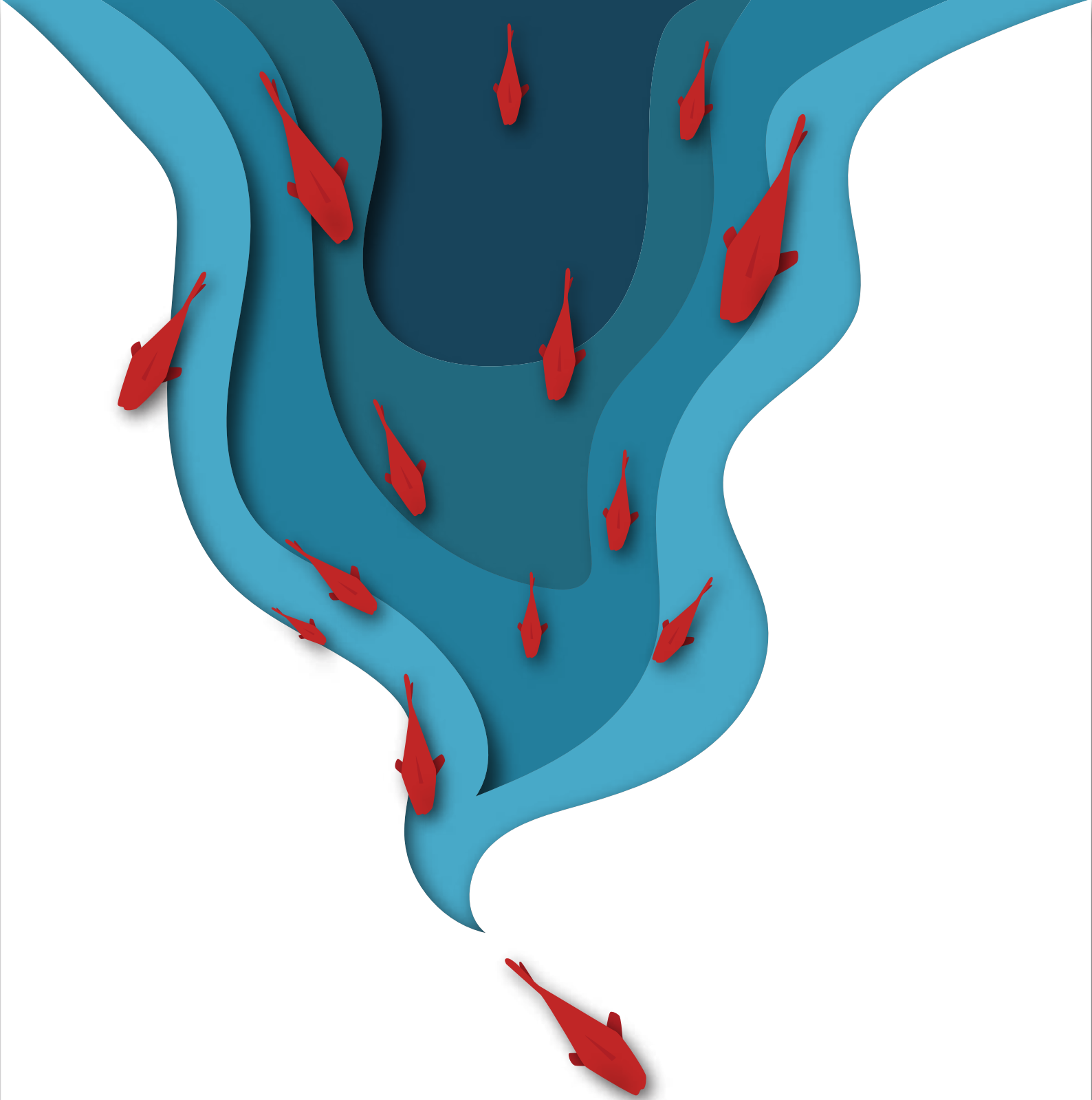
IMAGINING & CRAFTING A BETTER COMMUNITY



**ANNUAL REPORT
2019 - 2020**



**Mineral Foundation
of Goa**



MISSION STATEMENT

To promote social investment programmes through capacity building of stakeholders, participatory decision making; support ongoing efforts and to improve the natural environment for sustainable development.

INDEX

02	From Chairman's Desk	08	Community Based Tourism	12	Integrated Development Of Village Panchayat	14	Scholarship Programme	16	Facts and Figures
04	About Mineral Foundation Goa	06	Neetal Gram						





FROM THE CHAIRMAN'S DESK

On December 12, 2020, the Foundation will have completed two decades of its presence in the State of Goa especially serving the people in the mining belt. The journey has been challenging right from the initial days of skepticism to the present day where the community works with us as a partner. This passage in time has been both meaningful and satisfying to say the least. As an organization that has been labelled as the face of the industry, today MFG is trusted equally by the community, the Government and funding agencies as a people's organization. This achievement has only been made possible because of all the members of the Foundation who have been pillars of support even during difficult times that they face, my colleagues on the Governing Board, members of the Society who have directly and indirectly contributed to the policy making and most importantly the devoted and committed staff that has steadfastly held together a ship that has seen and experienced all kinds of weather.

From a modest start with a small secretariat and a hand full of projects, the Foundation went on to establish various field and project offices with dedicated staff running various projects and programmes parallelly across the entire State. While some projects such as infrastructure development were targeted short term interventions, some programmes such as the Women Empowerment, Environment Education, Scholarships have been running successfully for decades.

During the course of this journey, the Foundation has pioneered and executed a number of ideas such as the Gram Nirman (Integrated Village Development), registering of Goa's first Ecotourism Co-operative Society, putting together the first Waste Management Plan for a Village Panchayat.

As a testament to its efficiency, the constitution of the Foundation (MFG) itself had been fundamentally conceptualized to be used as a model to formulate the District Mineral Foundation's (DMF) all over the country as per the amendment to the MMRDA in 2015. We are hopeful that the State Govt., through its DMFs will take on board the MFG and utilize its expertise of over two decades of hands on working experience with the communities in the mining belt of Goa so that maximum benefits are ploughed back towards the welfare of these communities.

Through these past few challenging years in the Goa Mining Industry, the work of the Foundation continues unabated. It is indeed gratifying to know that the services and advice of the Foundation is sought by Government of the neighbouring State of Maharashtra through its Tribal Development Department as well international organization such as the United Nations Development Programme (UNDP) for its Dry Waste Management Programme in Goa.

I have no doubt that the Foundation is evolving and adapting to these changing times and with the support of the members will continue serving the people of Goa and beyond.

Nathan Chowgule
CHAIRMAN



The Mineral Foundation was registered under the Societies Registration Act, 1860 on December 12, 2000.

The Mineral Foundation was registered under the Societies Registration Act, 1860 on December 12, 2000. The Foundation operates on a two-tier arrangement of a Governing Board and an Executive Committee. The power of managing the business and funds of the Foundation as well as formulating broad policies are vested with the Governing Board. The Executive Committee examines the proposals received from the communities and recommends to the Board for its approval, besides monitoring the implementation of the projects.

Objectives



Address environmental and social issues concerning the communities through formulation and implementation of developmental programmes



Contribute to the economic and social development of the local communities



To channelize the efforts underway and to pool together activities to improve the environment



To revive participatory approach in agricultural, livestock and other activities of the Foundation



To improve the conditions of women, senior citizens and the youth of the region

GOVERNING BOARD

Mr. Nathan Chowgule
Chairman

Mr. Ambar Timblo
Vice Chairman

Mr. Sauvick Mazumdar
Hon' Secretary

Mr. Madhukar Malliya
Hon' Treasurer

Ms. Swati Salgaocar
Member

Mr. Narayan Bandekar
Member

Controller General, IBM

Secretary (Mines), GoC

Dr. Ajit Parulekar
Civil Society Representative

EXECUTIVE COMMITTEE

Mr. Nathan Chowgule
Chairman

Collector (North Goa)

Collector (South Goa)

Mr. Satish Tendulkar
Civil Society Representative

Dr. Celsa Pinto
Civil Society Representative

Mr. Glenn Kalavampara
Secretary, GMOEA

Dr. Sachin Tendulkar
Chief Executive Officer

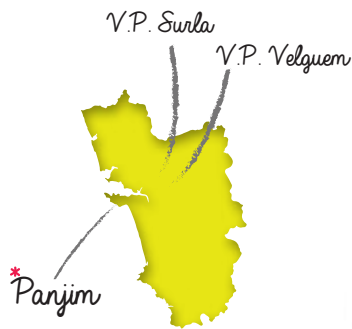
Mr Parag Rangnekar
Programme Manager



NEETAL GRAM

Dry Waste Management Programme

Mineral Foundation of Goa has been engaged in the sector of SWM for the last 9 years. The work that began with 1 village with 168 households, today has spread to 30 Panchayats, 3 Municipal Council and 1 City Corporation covering over 3.5 lakh population.



Our work includes awareness, training, capacity building of communities and local governing body functionaries to effectively tackle the issue of solid waste including hand-holding and technical support to put systems in place that are practical and cost effective. We work closely with the **Goa Waste Management Corporation (GWMC)** and **the Department of Municipal Administration (DMA)** and our work has gained us the recognition of Technical Support Unit from the Directorate of Panchayat. Two of the Panchayats, **V.P. Surla & V.P. Velguem** that we supported, are the first to draft **their Waste Management Plan** that is approved by the respective Gram Sabhas. This initiative now has become a mandate for the Govt. through the GWMC. Through the project, we have been able to put together a management strategy for dry waste for the City of Panjim, the capital city of Goa.

The project also has an important agenda of mainstreaming the waste pickers that work in the informal sector through opening of bank accounts, linkage with insurance and other govt. schemes and ensure that the **Safai Sathis** and their families live a dignified life. During the ongoing COVID-19 set-back, we along with our partners have been able to support more than **250 families** of Safai Sathis with PPEs and dry ration for 4 months.

This project that was conceptualized and executed to support the ongoing efforts of the State Govt., today is a partner with **the Plastic Waste Management Programme** of the United Nations Development Programme (UNDP) for the State of Goa.

Facts and figures:



Area covered:
30 Village Panchayats, 3 Municipal Councils and 1 City Corporation



Livelihood generated
10 field staff, 75 Safai Sathis at the MRF facilities and 60+ Safai sathis at the Village Panchayat level



Lives impacted
A population of around 3.50 lakh



Dry Waste handled
4500 tonnes of dry waste
75 educational institutes covered for IEC and 45 tonnes of dry waste collected



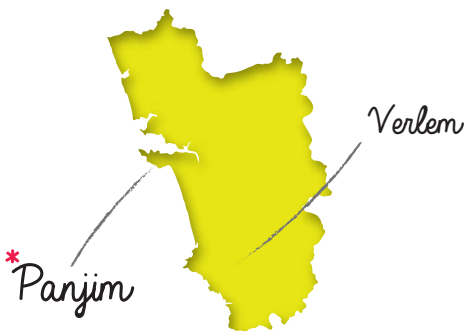
COMMUNITY-BASED TOURISM

Village Stay & Home Stay

Community-based tourism is tourism in which local residents (often rural, poor and economically marginalized) invite tourists to visit their communities with the provision of overnight accommodation. Community-based tourism enables tourists to discover local habitats and wildlife and celebrates and respects traditional cultures, rituals and wisdom. The community is made aware of the commercial and social value placed on their natural and cultural heritage through tourism, thus fostering community-based conservation of these resources.



Benefits of Community-based tourism



In the year 2012-13, the Foundation embarked on one of its most ambitious project of setting up a community-based tourism model in the village of Verlem in Netravali Panchayat, Sanguem taluka, South Goa. The plan was to create a model of community-owned and community-operated tourism that believes in and practices the principles of responsible and ethical tourism.



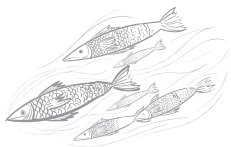
The project development involved extensive community engagements including **Participatory Rural Appraisal (PRA)** and **Focused Group Discussions (FGD)**. We discussed and debated the way forward since no working model was available at the local context.



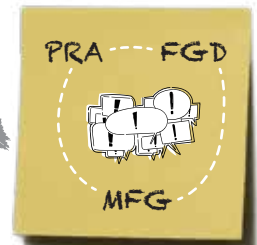
After various deliberations over a period of more than 6 months, a model was developed that was branded as **Aangan - Village Stay**. A governance structure of a co-operative society was created called the **Verlem Eco-Tourism Co-operative Society**. This society incidentally is Goa's first tourism co-operative for which independent by-laws were drafted.



The project has many sustainability principles engrained within such as waste management, carrying capacity, equity etc. and it has been successfully operating for the last 8 years. Under the project, we also helped the community to set-up Goa's first commercial strawberry cultivation and add value to the project. **The Strawberry Project** has now garnered support from the Government and two more villages in the vicinity have taken up cultivation.



Subsequently, the Foundation helped the community from a small hamlet in the village of Taldem in Sancordem to set up the **Jungle Trails Homestay**, which is managed and operated by a women's SHG consisting of 14 women since 2017.



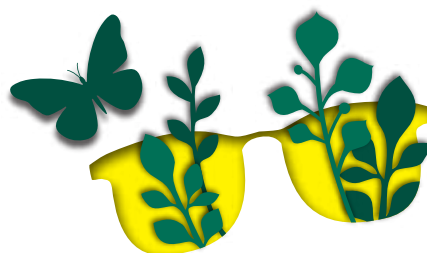


Because of the project's success in Goa, the Foundation was invited in 2019 to help the Tribal Development Department - Govt. of Maharashtra to **"Devise a community based ecotourism model for the Village of Veti in Dahanu District"**.

The village of Veti, is primarily a tribal village consisting of Malharkoli and Warli tribals, famous for their Warli Art, a Geographical Indicator (GI) for the district.

During the one year of project period, an assessment of the tourism potential of the village has been carried out with positive results.

Currently, the identification of various stakeholders, community mobilization and concept development is in process.



Facts and figures:



Lives Impacted
250 households



Community Engagement
Setting up of Verlem Ecotourism Co-operative Society



Guests Hosted
2,500



Turnover
Rs. 23 Lakhs



Important Guests / Institutions Hosted

- Prof. Madhav Gadgil, Senior Ecologist and Founder of Centre for Ecological Sciences, Bangalore
- Dr. Anish Andheria, President, Wildlife Conservation Trust
- Mr. Yuwaraj Gurjar, Acclaimed Wildlife Photographer
- Mrs. Manisha Verma, Principle Secretary (Tribal Development), Govt. of Maharashtra
- HSBC Next Generation Programme for two years
- Centre for Learning, Bangalore
- Rishi Valley School, Andhra Pradesh



INTEGRATED DEVELOPMENT OF VILLAGE PANCHAYAT

Convergence of Government Schemes

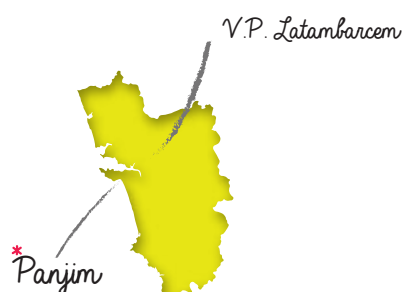


Mineral Foundation of Goa has executed a project titled “Integrated Development of Village Panchayat Latambarcem in Goa through Convergence of Government Schemes”. The project was funded by the Rural Development Agency, Government of Goa along with Goa Institute of Public Administration and Rural Development (GIPARD).

The project aims at convergence of different schemes of the Goa Government through its different departments at village panchayat level. The duration of the project was from August, 2019 to March, 2020 as per the MoU signed between GIPARD and MFG. **The main objective of the project was to assess the enhancement of livelihoods among the beneficiaries under NRLM through convergence with the line department and suggest corrective methods for implementation.**

MFG conducted awareness meetings at village level with the SHGs, Voluntary Organization, Gram Panchayat, and Gram Sabha. PRA technique and sectoral visits with the help of volunteers and cluster resource person were organized. A baseline household survey was undertaken in the panchayat and primary data of residents with reference to different schemes was collected to do detailed mapping.

After consultation and mapping and as part of National Rural Livelihood Mission (NRLM) MFG initiated cluster formation to promote vermicomposting as a livelihood activity. For this, village organisation formed by federating different Self Help Groups, Dairy farmers and farmers was taken on board. **In order to train the beneficiary’s two training programs were organized in Kasarpal Latambarcem with Agricultural Technology Management Agency (ATMA) with active help from Zonal Agriculture Office, Bicholim.** Earthworms were provided free of cost to training beneficiaries to continue with the composting activity on small scale or big scale with the help of the agriculture department. They were assured support for branding, packaging and marketing.



MFG also conducted camps for the benefit of agriculturists, dairy farmers, awareness on health, entrepreneurship and few other activities as part of the project. Special camp was organized to facilitate Krishi Card through Zonal Agriculture Office, Bicholim so that the farmers can avail different benefits associated with Krishi Card.

The agency also tried mobilising the self-help groups in the village to take up entrepreneur activity as a step towards women empowerment. The project also tried to create awareness amongst different stakeholders about the government department schemes.





SCHOLARSHIP PROGRAMME

Nurturing Talent in Rural Goa

The Scholarship Programme was one of the earliest programmes of the Foundation initiated in 2003. It was observed that there exist bright students in the remote rural areas of Goa but cannot pursue their dreams of higher studies due to financial incapability. Hence, at inception, the Scholarship programme was aimed at supporting higher studies of needy but meritorious students from the mining belt of Goa. While financial need was a criterion, merit was given importance.

1

The Foundation strongly believes that social investment programmes should be flexible and need based. With this philosophy in mind, feedback was sought from the scholars, educational institutions and larger community.

3

The Foundation also set-up the **MFG Scholars Alumni Association**, that provided a platform for the scholars to interact as well as contribute to various programmes of the Foundation. This initiative saw many scholars participating in the Environment Education Programme, Health Camps etc.

2

As the years went by, the merit-cum-means programme had gained popularity and feedback suggested that it needed to be expanded to get into its ambit, students seeking to develop technical skills at the Diploma and ITI level.

4

Since 2018, due to paucity of funds, the programme has been curtailed with no new selection of scholars, but the existing scholars continue receiving support.



Facts and figures:



Scholars till date

Total Scholars

328

Medicine	30
Dental	03
Engineering	82
Pharmacy	12
MBA / MCA	18
Hotel	02
Management	64
PG	

Architecture	01
Law	13
B.Ed.	24
Nursing	14
Diploma	52
ITI	07
BBA / Bachelor in	06
Library Science	

EXPENDITURE 2019 - 2020

Investing in the State's Future

PARTICULARS

2019-2020

Livelihood Generation

(Including Women Empowerment)..... 2,79,224

Educational Support..... 5,86,653

Learning, Research & Training..... 5,559

Community based Waste Management..... 20,20,551

Village Development Plan..... 1,18,353

Promotion of Community-based

Eco Tourism..... 6,64,621

TOTAL

36,74,961

Impacting Lives For 20 Years

COMMUNITY INFRASTRUCTURE &
NATURAL RESOURCE MANAGEMENT



202977

HEALTH



91578

WATERSHED



5012

EDUCATIONAL
INFRASTRUCTURE



97293

TOTAL
729771



GRAM NIRMAN



13856

GRAM NIRMAN



13856

WOMEN EMPOWERMENT



1532

SOLID WASTE MANAGEMENT



314450

ENVIRONMENT EDUCATION



3073

*Figures indicate number of beneficiaries

MEMBERS



VEDANTA LTD.
Sesa Ghor, Post Box 125, Panaji, 403 001



SESA RESOURCES LTD.
Sesa Ghor, Post Box 125, Panaji, 403 001



SESA MINING CORPORATION PVT. LTD.
Sesa Ghor, Post Box 125, Panaji, 403 001



SOCIEDADE DE FOMENTO INDL. LTD
Post Box 31, Vila Flores daSilva, Erasmo Carvalho Street, Margao 403 601



CHOWGULE & CO. PVT. LTD
Chowgule House, Mormugao Harbour, Vasco-da-Gama 403 803



EMCO EMCO GOA PVT. LTD
Shri Damodar Krupa Prasad, Rawanfond - Aquem - Baixo, Navelim, Margao 403 707



V. M. SALGAOCAR & BRO. PVT. LTD.
Salgaocar House, Post Box 14, Vasco-da-Gama 403 802



M/S AHILIABAI SARDESAI
2nd Floor, Navelkar Arcade, Panaji 403 001



COSME COSTA & SONS
Altinho, Mapusa 403 507



TIMBLO PVT. LTD.
Kadar Manzil, Post Box 34, Margao 403 706



DBB D.B. BANDODKAR & SONS PVT. LTD.
Atmaram Commercial Complex, Dr. A.B. Road, Panaji 403 001



RAJARAM BANDEKAR (SIRIGAO) MINES PVT. LTD
601, 6th Floor, Dr. Ozler Forum, Near St. Andrew Church, Post Box 31, Vasco-da-Gama 403 802



M/S RAGHUVIR SINAI GHARSE
Parca George Square, Near Municipality, Post Box 204, Margao 403 601



PANDURANG TIMBLO INDUSTRIAS
Subhash Timblo Bhavan, P.O. Box 242, Margao 403 601



**Mineral Foundation
of Goa**

CONNECT WITH US

Head Office:

P.O. Box 113, Vaglo Bldg, Panaji, Goa 403 001

Tel: 0832 - 2232414/6641501

Email: mfgoa2000@gmail.com

Annual Report is Created & Conceptualized by: Owlways Creative