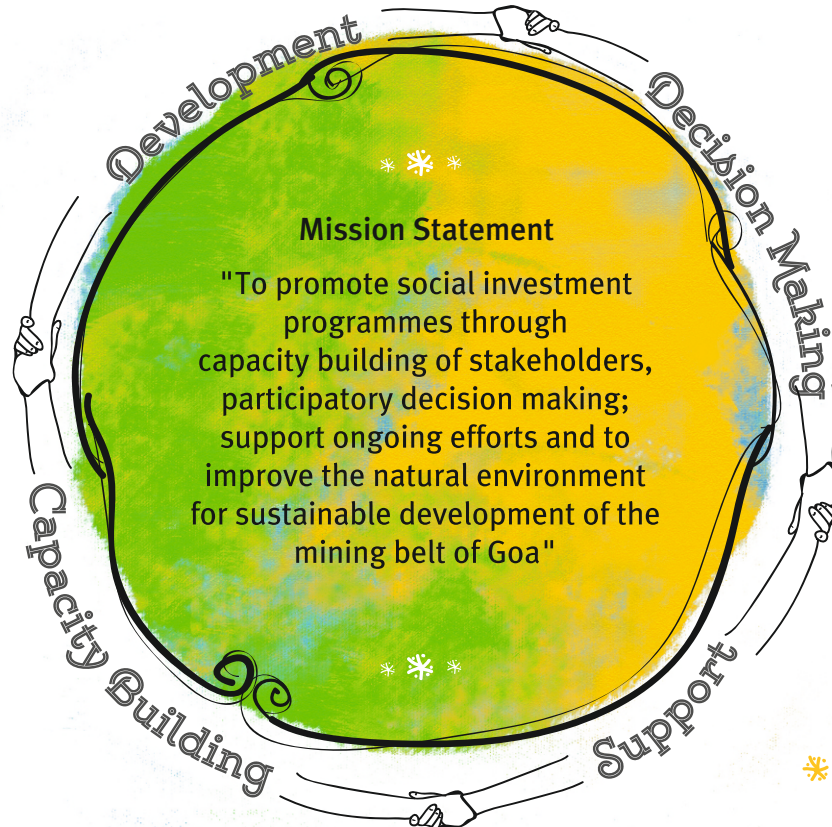




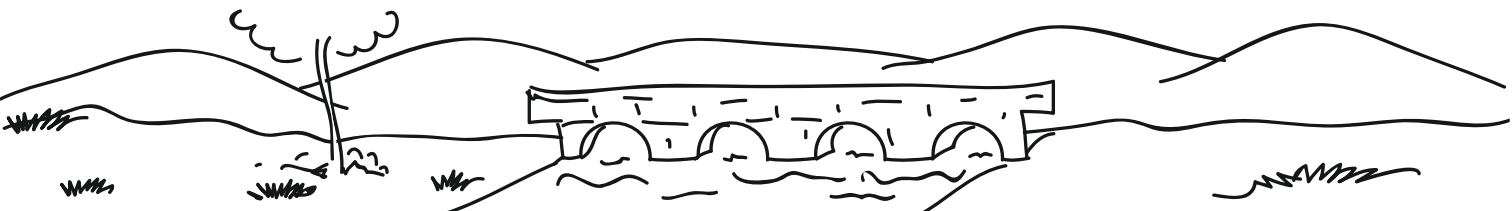
Mineral Foundation  
of Goa

Annual Report 2013-14



# TABLE OF CONTENTS

1. From the Chairman's Desk
2. About Us
3. Case-studies:
  - Strawberry Cultivation
  - Teaching Quality Improvement Programme
  - Health Programme
  - Environment Education
  - Micro Entrepreneurship Development Programme in Vermicomposting
  - Infrastructure
  - Promotion of System of Rice Intensification (SRI)
  - Watershed Development Programme
  - MFG Scholarship Programme
  - Vegetable Cultivation
  - Eco-tourism Project for Verlem, Netravali
  - Women Empowerment
4. Our Members
5. Investment on Various Developmental Projects
6. Our Team





## FROM THE CHAIRMAN'S DESK

The mining industry has been an integral part in the development of Goa and its economy for the past six decades. The past two years however have proven to be two of the most trying years as the industry has come to a grinding halt. Even during this time, the industry has responded with maturity and continues its keen support for the activities of the Mineral Foundation.

At the Foundation, it is business as usual. Our projects have not only continued but have been designed to suit the conditions and have grown in prominence. MFG has designed projects which require less finances but reach out to more people. Focus on agriculture and horticulture as an alternate means of livelihood for the mining dependent has seen the birth of innovative projects such as the vegetable cultivation project which targets women Self-Help Groups to grow vegetables and links them to the scheme of the Goa State Horticulture Corporation. The project benefited 400 women who supplied 12 tonnes of vegetables to the Corporation with a turnover of over 4 lakh rupees. The spread of the System of Rice Intensification (SRI) project has covered to 121 ha. and has benefited 556 farmers. One of the key achievements was the cultivation of strawberry by a women's SHG in Verlem, Netravali. Branded as "Goan Strawberry", the produce and the project the produce and the project caught the fancy of the Goans who

thronged to the plot in large numbers to witness, collect and buy local strawberries. The project was a commercial success and demonstrated the need for innovation and value addition to agriculture in Goa.

The Foundation during this time also forged partnerships to ensure that projects and funds are not affected. Joining hands with Goa Shipyard Ltd. to implement its CSR project through Watershed Development, SRI & Vermicomposting projects with National Bank for Agriculture & Rural Development (NABARD), the Foundation has ensured that the people in the mining belt are not affected due to the stoppage of the mining activities.

The spotlight on education continues with the Scholarship Scheme for higher studies as well as adding value to the skills of the teachers at the Aanganwadi level to ensure that the foundation of the future generation is built on firm grounds. The Environment Education Programme adds further value to the education of the students at the high school level.

The challenges faced by the mining industry increases the challenges at MFG. I would like to recognize the support of my colleagues in the Governing Board, Executive Committee,

the hard-working Secretariat and the community from the mining belt as I am positive that the Foundation will continue to play an integral role in sustainable development in the mining belt and also shape the future of the mining industry in Goa.

Nathan Chowgule  
CHAIRMAN



# ABOUT US

Mineral Foundation of Goa (MFG) is a non-profit organization promoted by the mining industry since 12th December 2000 to find practical solutions to protect the environment and improve people's lives in the mining belt of Goa. MFG along with its partners services nearly 80 villages distributed in 28 panchayats. Each of its projects contributes to one of more of 8 Millennium Development Goals.

## THE MINERAL FOUNDATION OF GOA AIMS TO

- Address environmental and social issues concerning the communities in the mining belt of Goa through formulation and implementation of developmental programmes.
- Contribute to the economic and social development of the local communities by training and capacity building.
- To facilitate tripartite partnership amongst industry, government and civil society for ensuring sustainable livelihood and mining.
- To channelise the efforts underway and to pool together activities to improve the environment.
- To revive participatory approach in agricultural, livestock, forestry and other activities of Foundation
- To improve the conditions of women, old people and the youth of the region.

## GOVERNANCE:

The Foundation operates on a two tier arrangement of a Governing Board and an Executive Committee, The power of managing the business and funds of the Foundation as well as formulating broad policies towards attaining its goals are vested with the Governing Board. The Executive Committee examines the proposals received from the communities and recommends to the Board for its approval, besides monitoring the implementation of the projects.

### GOVERNING BOARD

Mr. Nathan Chowgule  
Chairman  
Mr. Narayan Bandekar  
Vice Chairman  
Mr. Pramod Unde  
Hon' Secretary  
Mr. Madhukar Mallya  
Hon' Treasurer  
Mr. Shivanand Salgaocar  
Member  
Mr. P.K. Mukherjee  
Member  
Mr. C.S. Gundewar  
Controller General, IBM  
Mr. P.K. Sain  
Secretary (Mines), GoG  
Dr. J.C. Almeida  
Civil Society Representative

### EXECUTIVE COMMITTEE

Mr. Nathan Chowgule  
Chairman  
Mr. D. P. Dwivedi  
Collector (North Goa)  
Mr. Venancio S. Furtado  
Collector (South Goa)  
Dr. Sangeeta Sonak  
Civil Society Representative  
Dr. Satish Tendulkar  
Civil Society Representative  
Mr Glenn Kalavampara  
Secretary, GMOEA  
Mr. S. Shridhar  
Chief Executive Officer  
Staff of the Foundation

## CONNECTIVITY & MARKETING

The remote location and poor transport facilities was a challenge for effective marketing. The issue was sorted out by linkage with a wholesaler from Margao and transport on the early morning local bus.

## CAPACITY BUILDING

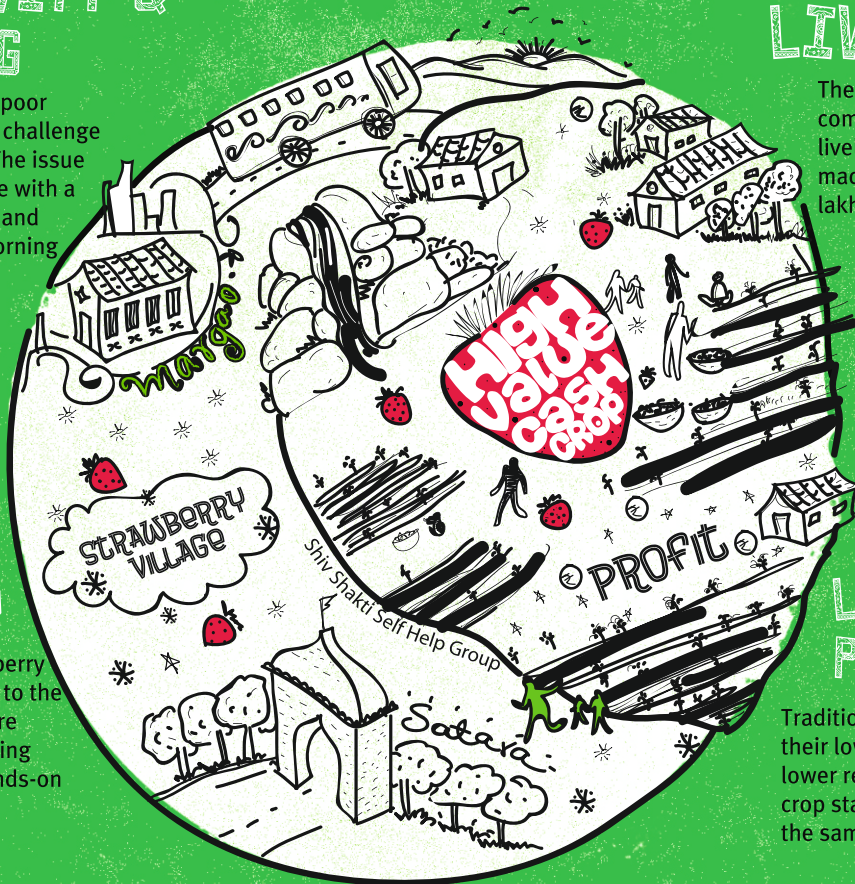
The know-how for strawberry cultivation was imparted to the farmers through exposure visits to strawberry growing areas like Satara and hands-on training at farms.

## LIVELIHOOD

The project has given the community an alternate livelihood option. The SHG made a profit of around 1.6 lakhs in one season.

## LOWER PRODUCTIVITY

Traditionally grown vegetables with their lower productivity fetched lower returns. The high value cash crop started giving higher returns in the same area



## Strawberry Cultivation



## CHILD FRIENDLY LEARNING

The programme includes playway method and main focus is on physical, motor, skill, cognitive and language development of kids below 5 years.

## ACTIVITY BASED LEARNING

The kids are made to learn through activities and by practical knowledge or experience so that they learn and remember better.



## FORMAL EDUCATION SYSTEM

The educational system was changed from the routine reading and writing method to the learning through activities and practical experiences



## FOLLOW-UP

Identified patients are regularly monitored for improvement in health conditions, especially malnourished students

## AWARENESS

Awareness on various health issues are conducted for various sections of the society



## LACK OF HEALTH SERVICES

MFG started a Medical Centre at Sacorda where there is poor medical facility.

## REGULAR DOORSTEP SERVICE

The van provides doorstep service to the elderly thereby reducing their burden of traveling.

## GYNAEC ISSUES

Women health issues are addressed through camps to screen women for cervical cancer and other problems.

## Health Programme



## FORMAL EDUCATION SYSTEM

The gap in theory and practice evident in the formal education system is bridged through hands-on activities.

## CLIMATE CHANGE

Students are exposed to practical ways to reduce their carbon foot print

## SUSTAINABILITY

Issues Like natural & common property resources, Solid Waste Management, wildlife, community conservation, energy etc. are discussed.

## PERSONALITY DEVELOPMENT

Various activities give a chance to students to get rid of their fears, ask question, seek answers and frame opinions.



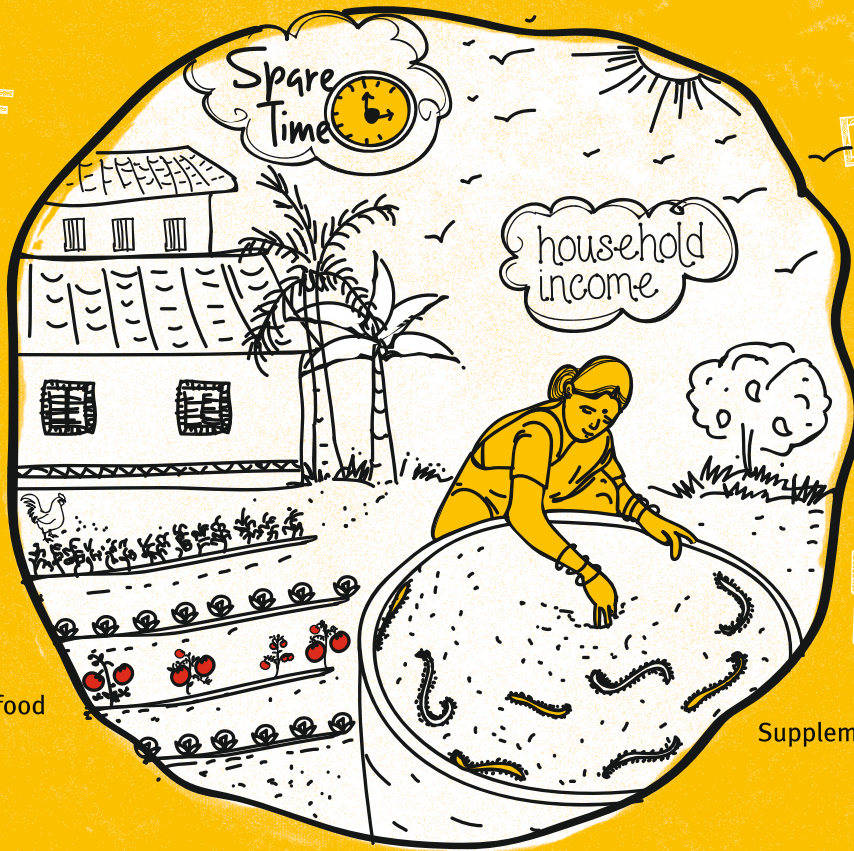


## PURCHASE OF MANURES

Production of rich manure at home

## CHEMICAL RESIDUE

Wholesome and organic food



## DEFFICIENT INCOME

Supplementing household income through sale of compost

## USE OF CHEMICAL FERTILIZER

Supplementing the fertilizer need.

**Micro Entrepreneurship Development Programme in Vermicomposting**

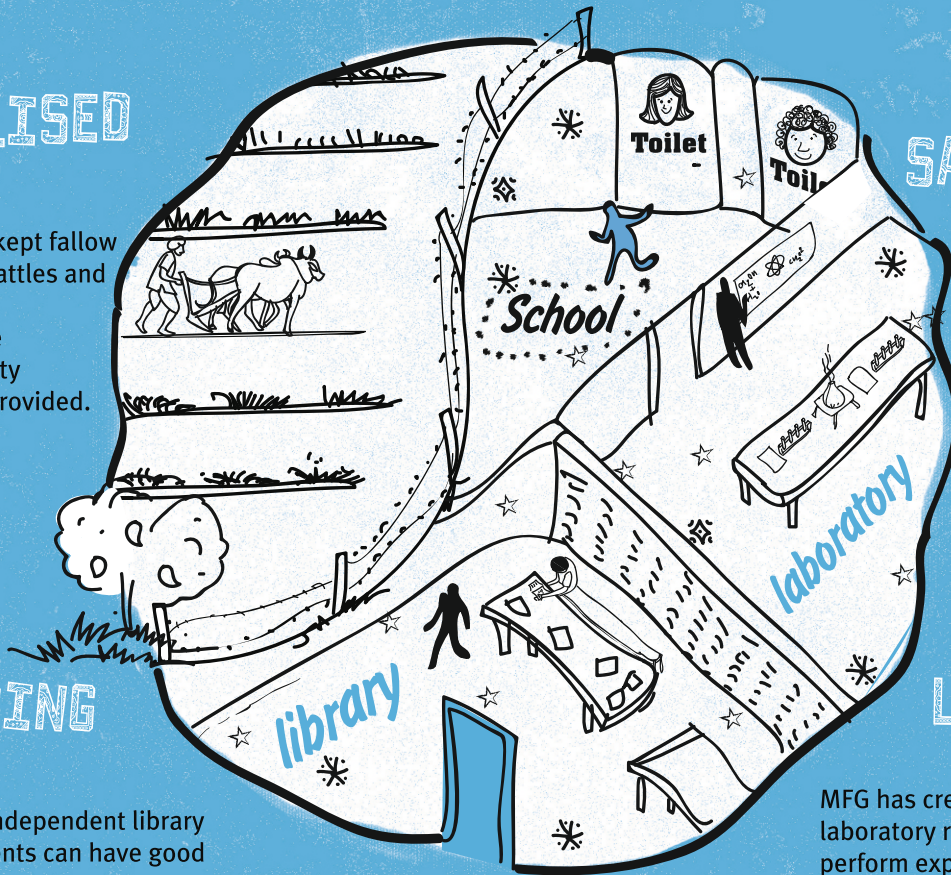


## UNUTILISED FIELDS

Paddy fields were kept fallow due to grazing of cattles and wild animals. To tackle this issue chainlink community fencing has been provided.

## NO READING SPACE

MFG has created independent library room so that students can have good facility for reading.



## SANITATION

School toilets have been constructed or renovated by installing urinals and proper squatting pans

## LABORATORY FACILITY

MFG has created independent laboratory room so that students can perform experiments with ease.



## EXCESS USE OF WATER

Water efficient  
technique hence  
optimum utilization  
of water

## EXTENSION SERVICES

Continuous field  
support through  
presence of dedicated  
staff

## PESTICIDES AND FERTILIZERS

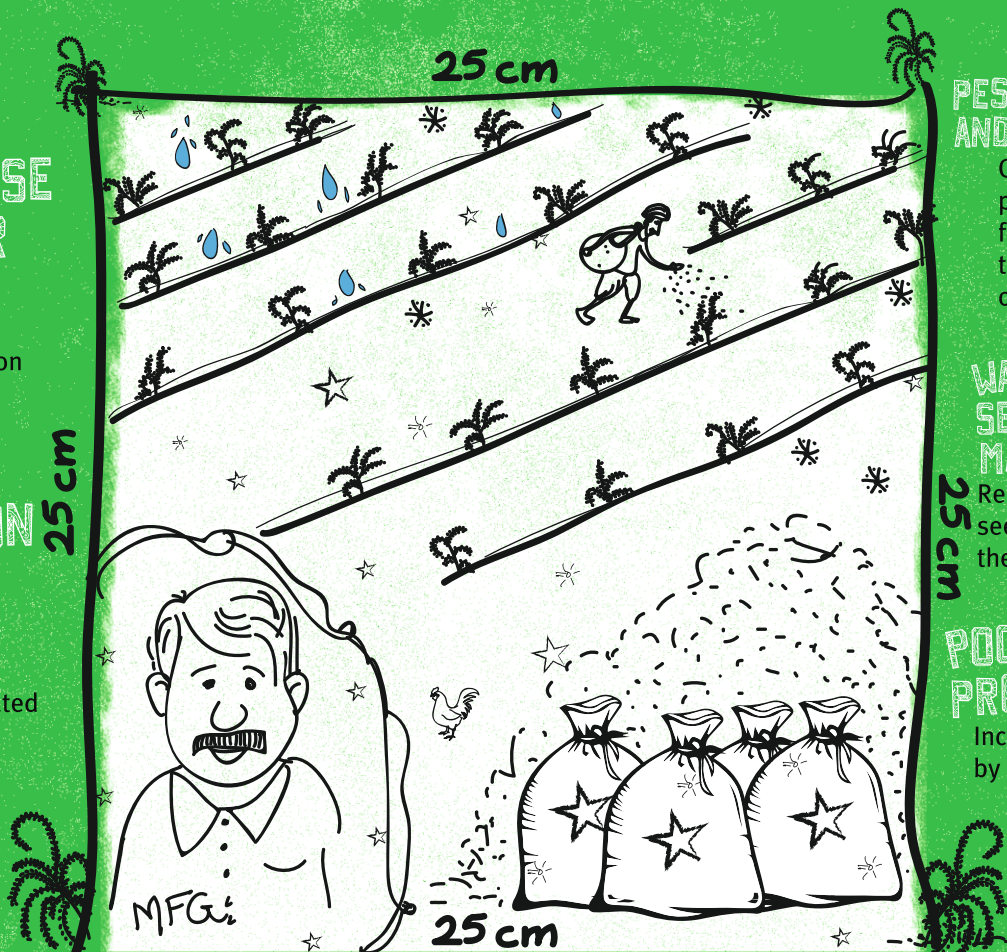
Optimum use of  
pesticide and  
fertilizer especially  
through use  
of vermicompost

## WASTAGE OF SEED MATERIAL

Reduction in use of  
seed material by 1/5  
the traditional method.

## POOR PRODUCTIVITY

Increase in productivity  
by upto 50%



Promotion of System of Rice Intensification (SRI)



## LIMITED LIVELIHOOD OPTIONS

Diversification of Livelihood Options through farm and non-farm based activities

## EROSION & RUNOFF

Promoted Soil and Water Conservation through various interventions like trenches, gully plugs etc

## ECONOMIC BACKWARDNESS

Developed a Corpus & Revolving fund for the benefit of the community

## DEPLETION OF WATER RESOURCE

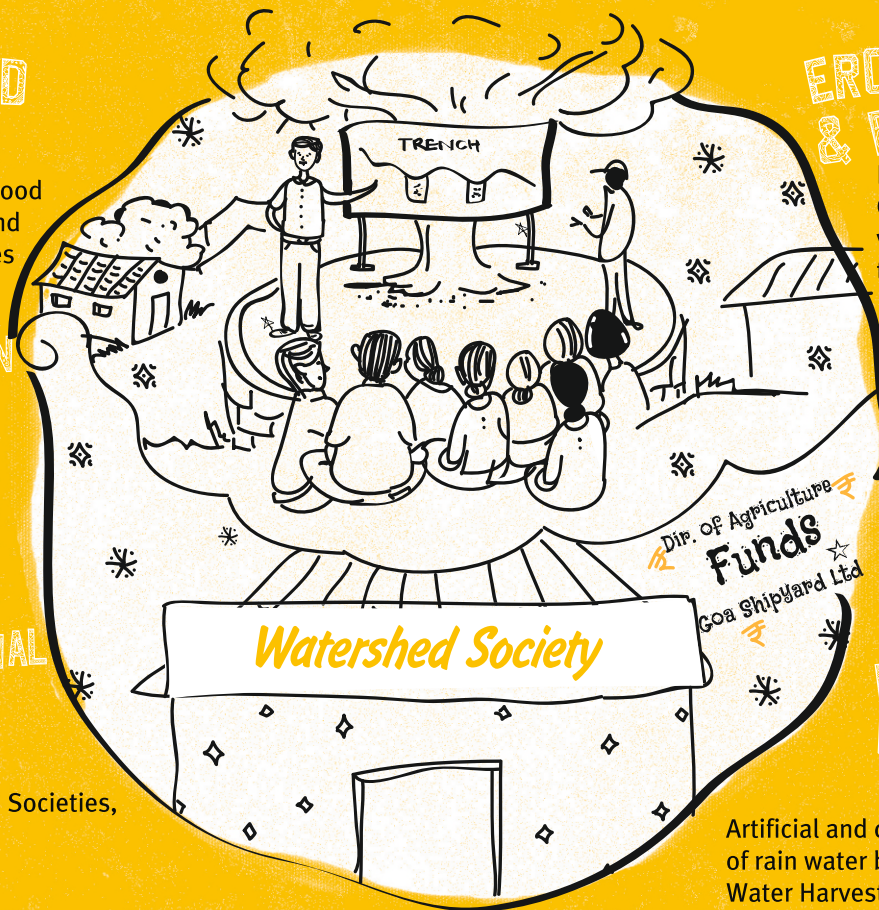
Artificial and decentralized recharge of rain water by developing Rain Water Harvesting potential.

## EXPLOITATION OF NATURAL RESOURCES

Live Fencing and Biomass Promotion

## ORGANIZATIONAL SKILL AND CAPACITY

Mobilizing Watershed Societies, SHG and User Groups



## Watershed Development Programme

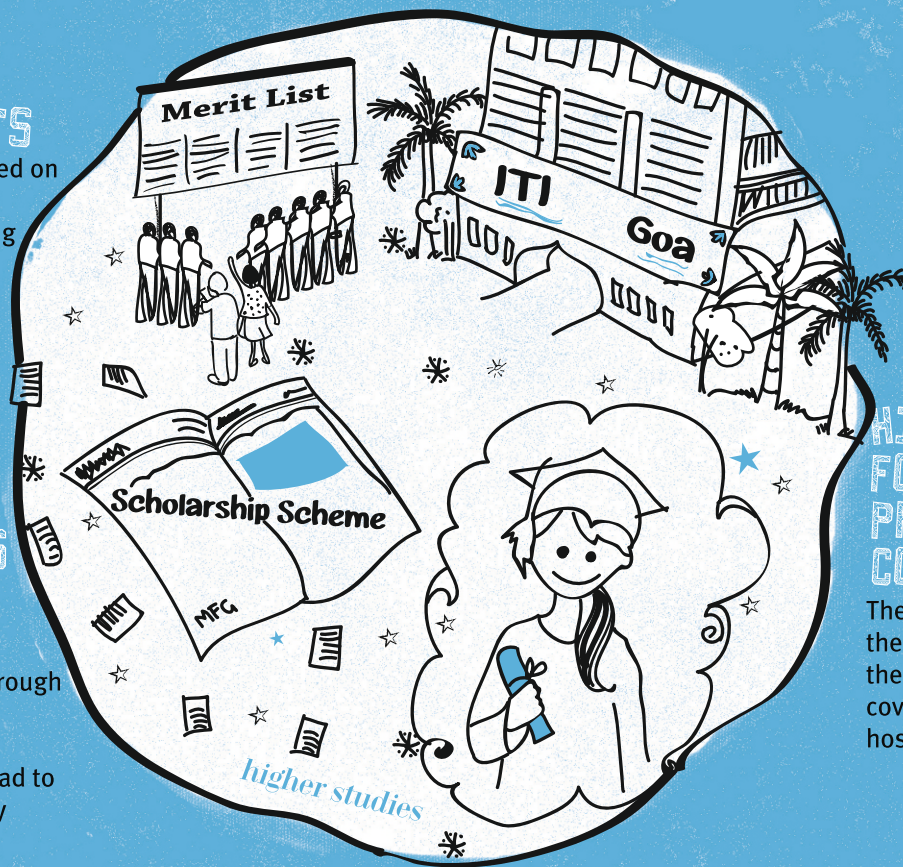


## MERITORIOUS BUT POOR AND NEEDY STUDENTS

Students are selected based on merit-cum-means to assist them in continuing their higher studies

## LACK OF OPPORTUNITIES AND AWARENESS

The scheme is popularized through newspapers, pamphlets are displayed in all educational institutes, information is spread to various sections of the society



## HIGH FEES FOR PROFESSIONAL COURSES

The scholarship is for the entire period of the course and covers the tuition and hostel fees.

# MFG scholarship Programme



## MOTIVATION

Through series of meetings/ interactions and explaining the benefits of the scheme women were motivated to undertake cultivation.

## MARKET LINKAGE

Facilitation with GSHDC resulted in opening of procurement centers near the respective zonal offices so as to ease collection from cultivators.

## LIVELIHOOD

The women were assured of a market for their product through the buyback scheme with fixed prices independent of the market.

## EXTENSION SERVICES

Visits of Zonal Agriculture Officers and ICAR scientists were organized on the fields for technical support.





## CONTROL OVER TOURISM AND BENEFITS.

Promotion of community based tourism through formation of cooperative society will enable villagers to have control over tourism activities.

## THREAT OF LOOSING ETHNICITY OF VILLAGE

To avoid exploitation of resources and disturbing village life, carrying capacity of inflow of tourists to the village has been fixed by the society.



## CONSERVATION

With tourism based on appreciation for natural elements, the project aims at long term conservation of natural resources through community participation.

## LIVELIHOOD

The tourism co-operative model is designed in such a way that it can render benefit to most through direct and indirect means.

**Eco-Tourism project for Verlem, Netravali**



## ACCESSIBILITY TO BANKING

A workshop along with bank managers and NABARD was planned to explain the easy methods of credit linkage. A total of 35 groups were credit linked for the year.

## HEALTH PROBLEMS

Lectures were organised for all the SHG ladies on Breast cancer awareness. Also 20 groups were trained in solid waste management and five groups on vermicomposting.

## MARKET LINKAGE

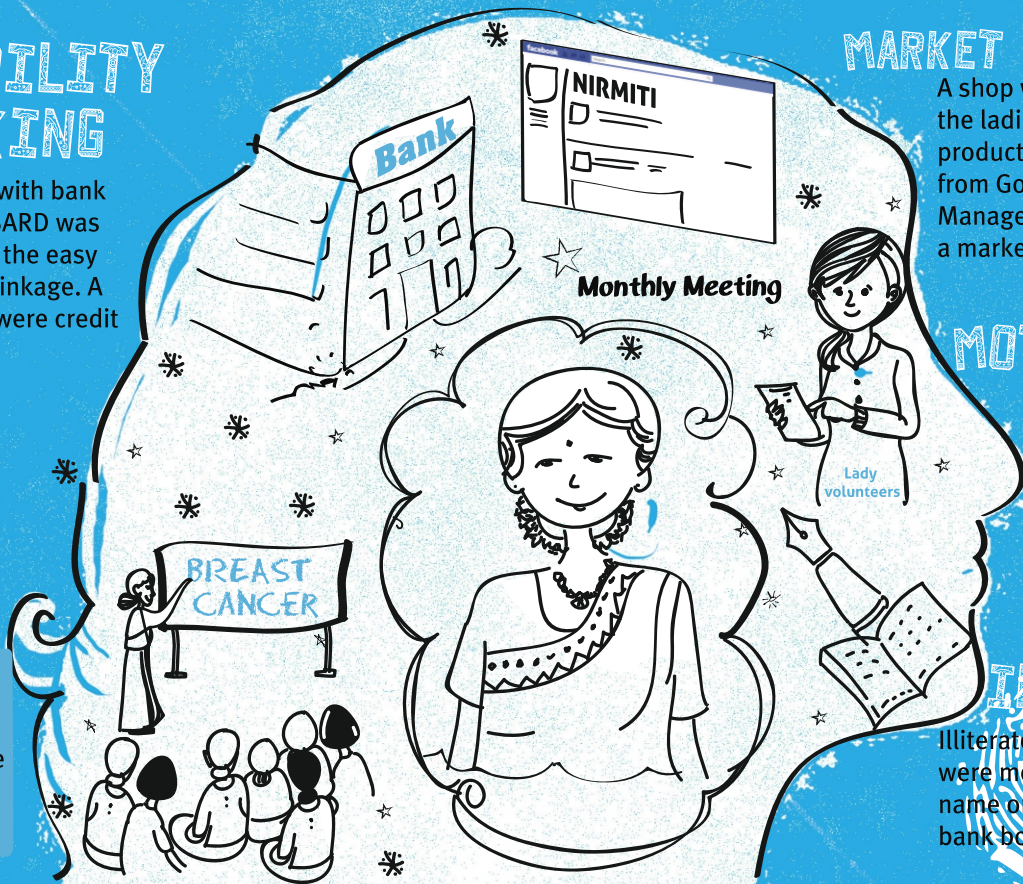
A shop was opened for the ladies to market their products. Also students from Goa Institute of Management carried out a market survey.

## MOTIVATION

Lady volunteers were identified and given the responsibility of overseeing SHG's.

## ILLITERACY

Illiterate SHG members were motivated to sign their name on the accounts and bank books.



## Women Empowerment

# INVESTMENT ON VARIOUS DEVELOPMENTAL PROGRAMMES



Sr. No	Particulars	F.Y. 2013-2014 (in ₹)	Cumulative (in ₹)
1	Livelihood Generation (Including Women Empowerment)	3,96,544	2,24,48,638
2	Educational Support	64,60,970	8,93,69,768
3	Health Programmes	31,12,805	3,83,59,607
4	Environmental Sustainability	44,50,113	14,09,26,357
5	Learning, Research & Training	1,03,183	5,93,593
6	Public Infrastructure	5,00,151	7,29,14,095
	Total	1,50,23,766	36,46,12,058





**MFG Executive Team  
headed by  
CEO Mr S. Sridhar**



# OUR MEMBERS

**SESA GOA LTD.**

Sesa Ghor, Post Box 125,  
Panaji, 403 001

**DAMODAR MANGALJI  
& CO. LTD**

Damodar Niwas, Alfonso  
Albuquerque Road, Panaji, 403 001

**SESA RESOURCES LTD.**

Post Box 166, First Floor,  
LIC Building, EDC Complex,  
Patto, Panaji, 403 001

**SESA MINING CORPORATION  
PVT. LTD.**

Post Box 166, First Floor,  
LIC Building, EDC Complex,  
Patto, Panaji 403 001

**SOCIEDADE DE FOMENTO INDL. LTD**

Post Box 31,  
Margao 403 601

**CHOWGULE & CO. PVT. LTD**

Chowgule House, Mormugao  
Harbour, Vasco-da-Gama 403 803

**EMCO GOA PVT. LTD**

Shri Damodar Krupa Prasad  
Rawanfond - Aquem - Baixo,  
Navelim, Margao 403 707

**V. M. SALGAOCAR & BRO. PVT. LTD.**

Salgaocar House, Post Box  
14, Vasco-da-Gama 403 802

**M/S AHILIABAI SARDESAI**

2nd Floor, Navelkar Arcade,  
Panaji 403 001

**COSME COSTA & SONS**

Altinho, Mapusa 403 507

**TIMBLO PVT. LTD.**

Kadar Manzil, Post Box 34,  
Margao 403 706

**COSME COSTA & SONS****D.B. BANDODKAR & SONS PVT. LTD.**

Atmaram Commercial Complex,  
Dr. A.B. Road, Panaji 403 001

**RAJARAM BANDEKAR (SIRIGAO)  
MINES PVT. LTD.**

601, 6th Floor, Dr. Ozler Forum,  
Near St. Andrew Church, Post Box 31,  
Vasco-da-Gama 403 802

**M/S RAGHUVIR SINAI GHARSE**

Parca George Square, Near  
Municipality, Post Box 204,  
Margao 403 601

**PANDURANG TIMBLO  
INDUSTRIES**

Subhash Timblo Bhavan,  
P.O. Box 242, Margao  
403 601

## Connect with us

**Head Office:**

P.O. Box 113, Vaglo Bldg, Panaji,  
Goa 403 001  
Tel: 0832-6641501, 6641502, 6642942  
Email: mfgoa2000@gmail.com

**North Office:**

C/o Gurudas Sawant, Flat No. 2, Karapur  
Tisk, Sanquelim  
Tel: 0832-2364354  
Email: mfgnorth@gmail.com

**South Office:**

Flat No.4, Kantak Plaza, Behind Bus  
Stand, Curchorem  
Tel: 0832 - 2653479  
Email: mfgsouth@gmail.com

[www.mfgoa.com](http://www.mfgoa.com)